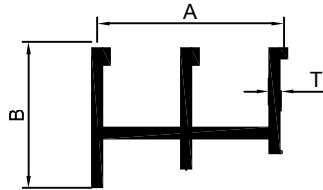




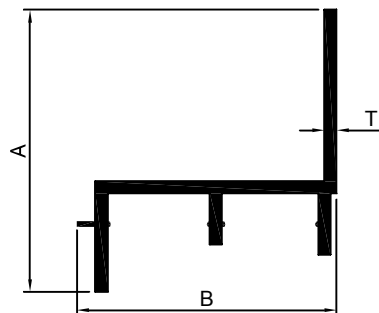
TRANSPORT ITEMS

DCM E BEADING



Section No.	A	B	T	Weight in Kg. / 12 ft.
3278	30.60	23.00	1.40	1.500-1.700
3279	30.60	23.00	1.60	1.700-1.900

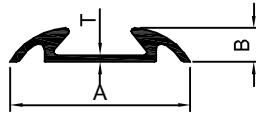
HI TECH BEADING



Section No.	A	B	T	Weight in Kg. / 12 ft.
3280	46.40	44,50	1.60	1.800-2.000
3281	46.40	44.50	1,80	2.000-2.200
3282	46.40	44.50	2.20	2.200-2.400
3283	46.40	44.50	2.50	2.400-2.700

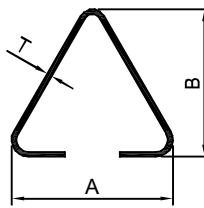


CHABI GOLA



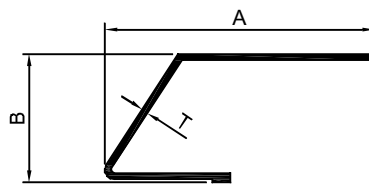
Section No.	A	B	T	Weight in Kg. / 12 ft.
9800	29.50	5.60	1.00	0.500-0.600
9801	29.50	5.60	1.20	0.600-0.800

GRILL BEDING



Section No.	A	B	T	Weight in Kg. / 12 ft.
9802	25.20	23.50	1.00	0.540-0.600

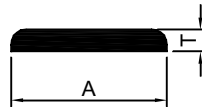
TVS WATER CHANNEL



Section No.	A	B	T	Weight in Kg. / 12 ft.
9803	44.00	20.40	0.90	0.750-1.000

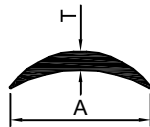


CURVE EDGED FLAT



Section No.	A	T	Weight in Kg. / 12 ft.
9806	25.40	3.00	0.700-0.800
9807	25.40	3.18	0.800-0.900

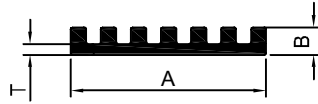
HALF ROUND FLAT



Section No.	A	T	Weight in Kg. / 12 ft.
9808	23.80	2.50	0.420-0.550
9809	23.80	3.00	0.550-0.650

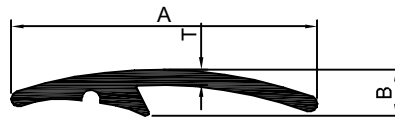


1450 PATHWAY BEADING



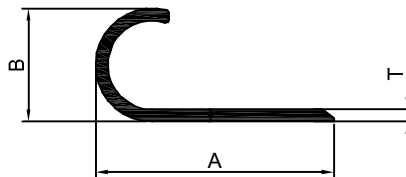
Section No.	A	B	T	Weight in Kg. / 12 ft.
5087	31.90	4.50	1.80	0.950-1.300

VOLVO BEADING



Section No.	A	B	T	Weight in Kg. / 12 ft.
5088	50.00	7.60	2.50	1.500-1.900

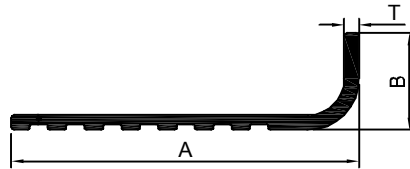
"J" WATER CHANNEL



Section No.	A	B	T	Weight in Kg. / 12 ft.
5089	39.00	18.50	2.00	1.100-1.500

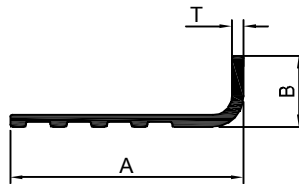


2 1/2 FOOT STEP BEADING



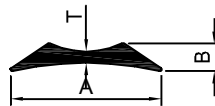
Section No.	A	B	T	Weight in Kg. / 12 ft.
5090	56.80	15.80	2.40	1.350-1.700

1 1/2 FOOT STEP BEADING



Section No.	A	B	T	Weight in Kg. / 12 ft.
5093	38.10	11.50	1.90	0.700-1.000

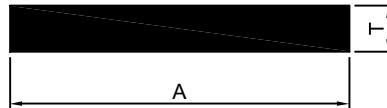
MUD GUARD BEADING



Section No.	A	B	T	Weight in Kg. / 12 ft.
5094	24.70	4.50	1.80	0.500-0.750



FLAT



Section No.	A	T	Weight in Kg. / 12 ft.
9820	12.00	3.00	0.320-0.380
9821	15.00	3.00	0.380-0.480
9822	19.00	3.18	0.580-0.680
9823	25.00	3.18	0.750-0.850
9824	25.40	6.35	1.500-1.800
9825	32.00	8.00	2.400-2.600
9826	30.00	18.50	5.400-5.800
9827	38.10	6.35	2.300-2.500
9828	50.80	6.35	3.000-3.500
9829	60.00	6.00	3.500-3.800
9830	76.00	10.00	7.400-7.800
9831	100.0	5.00	4.800-5.200
9832	100.0	12.00	11.500-12.000
9833	125.0	10.00	12.200-12.600
9834	125.0	12.00	14.500-14.900
5047	23.00	5.00	1.100-1.500